

Recent improvements to the soft fruit pathogen testing scheme in the UK

Alison Dolan and Hugh Barker

Scottish Crop Research Institute, Invergowrie, Dundee DD2 5DA Scotland.

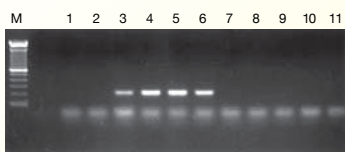
At SCRI we:

- test *Rubus*, *Ribes* and *Fragaria*
- operate to EPPO standards
- use world-leading biological, serological and molecular protocols (many devised at SCRI)
- constantly develop improved protocols
- recently developed a web site for the confidential release of test results to users



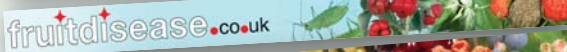
New test methods for Blackcurrant reversion virus and Gooseberry vein banding virus

- Existing tests takes up to 2 years to complete
- New PCR diagnostic tests devised at SCRI only take 2 weeks to complete
- Can use leaf or dormant bud material
- We are currently validating the new PCR tests against existing methods



New test methods for Phytophthora in raspberry using PCR

- Improving sample preparation
- Investigating new primers to improve sensitivity
- Implementing steps to improve QA
- Using specific primers for identification of *Phytophthora fragariae* var *rubi* and *Phytophthora idaei*
- Developing real-time PCR TaqMan® probes



- FruitGateway.co.uk (launched in October 2005) is a series of web sites and web-enabled applications covering all aspects of soft fruit work at SCRI, including Fruithealth, all accessible from the FruitGateway portal.
- Fruithealth.co.uk (launched in October 2004) is the site for UK and International soft fruit pathogen testing and maintenance of high-health germplasm incorporating fully validated tests devised at SCRI.

- For the future, we are developing the FruitDisease Information database that will be an innovative tool for pest and pathogen identification.